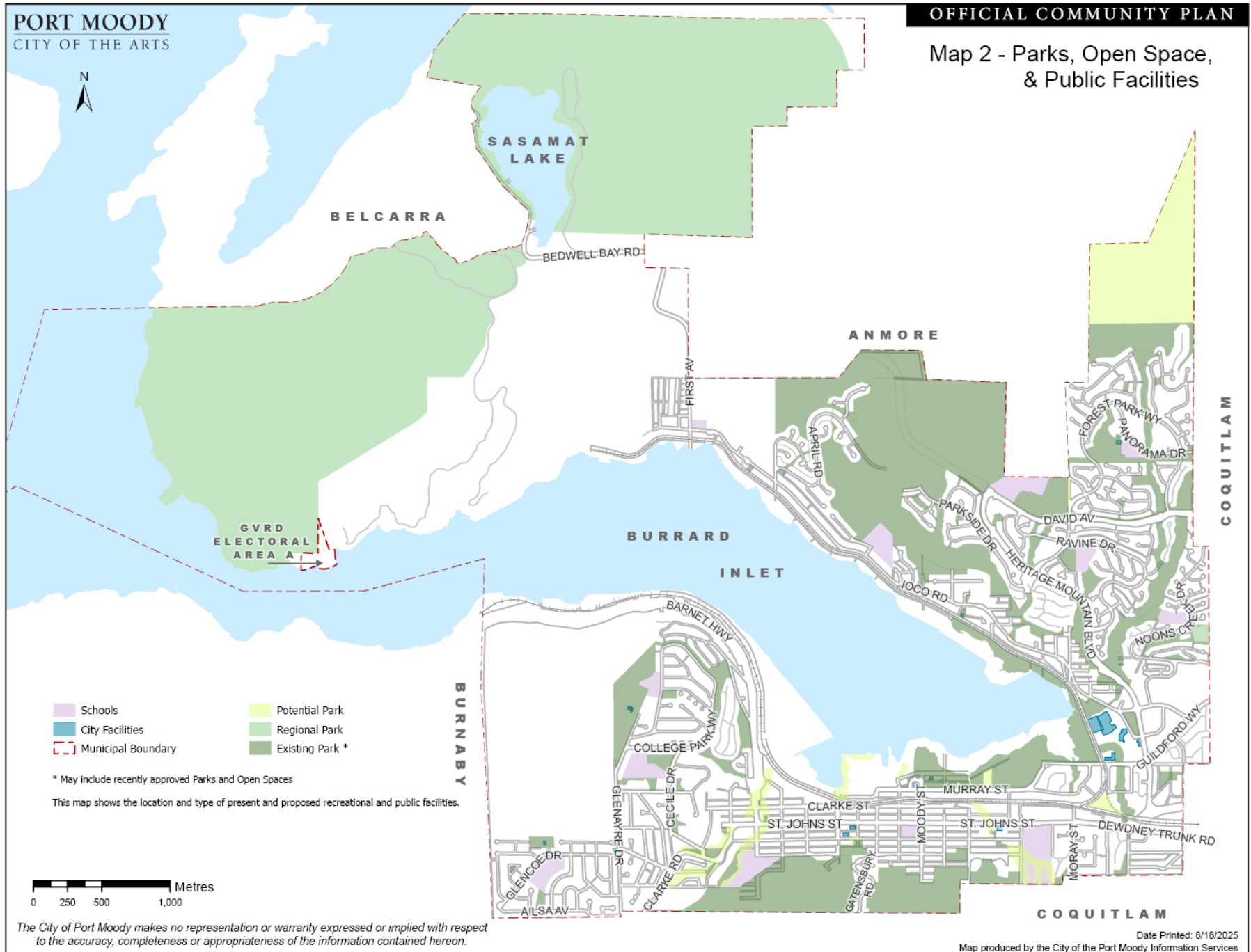


The City of Port Moody makes no representation or warranty expressed or implied with respect to the accuracy, completeness or appropriateness of the information contained herein.

Date Printed: 2/5/2026 10:47 AM  
Map produced by the City of the Port Moody Information Services

**Map 2 - Parks, Open Space, & Public Facilities**



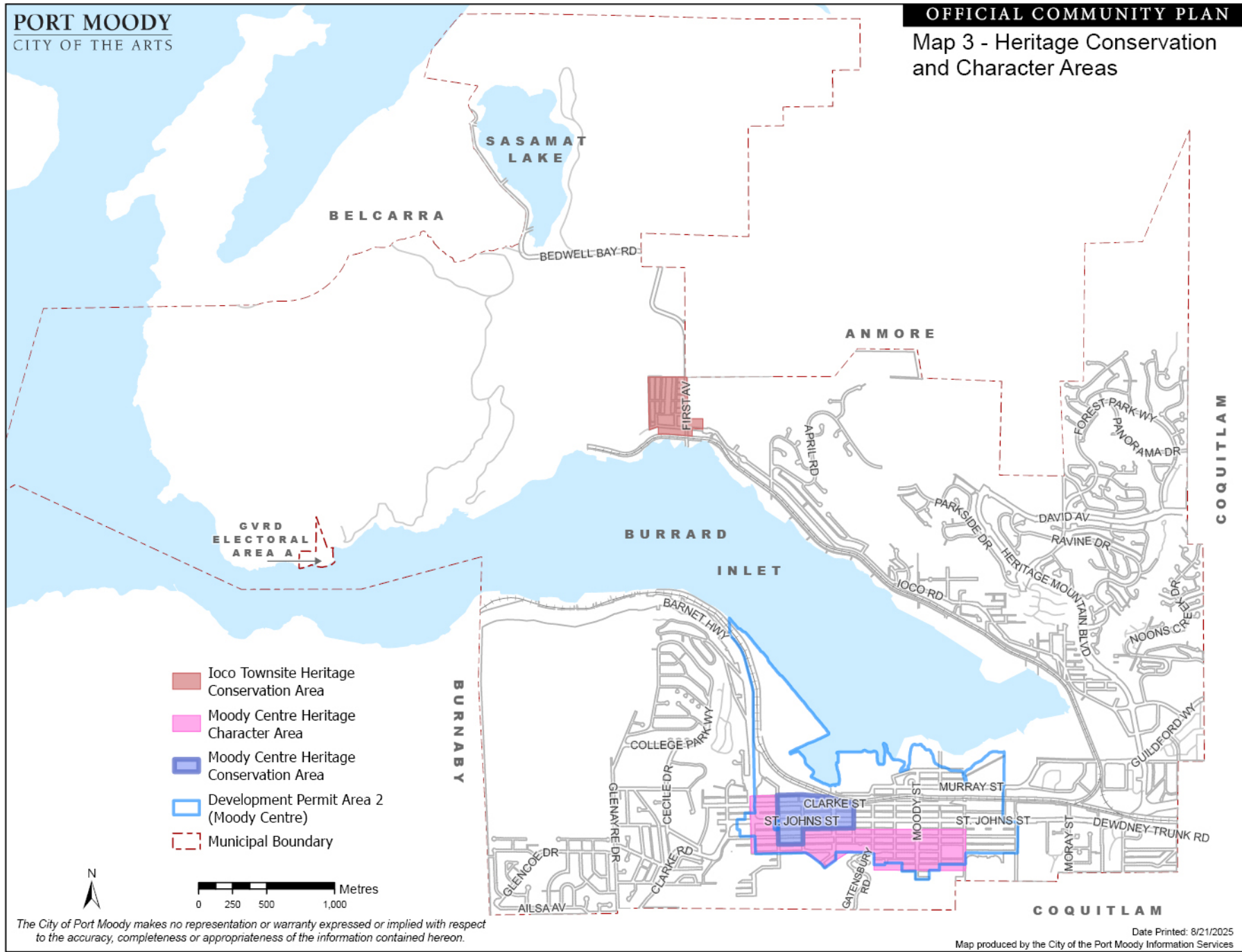
- Schools
- Potential Park
- City Facilities
- Regional Park
- Municipal Boundary
- Existing Park \*

\* May include recently approved Parks and Open Spaces  
 This map shows the location and type of present and proposed recreational and public facilities.



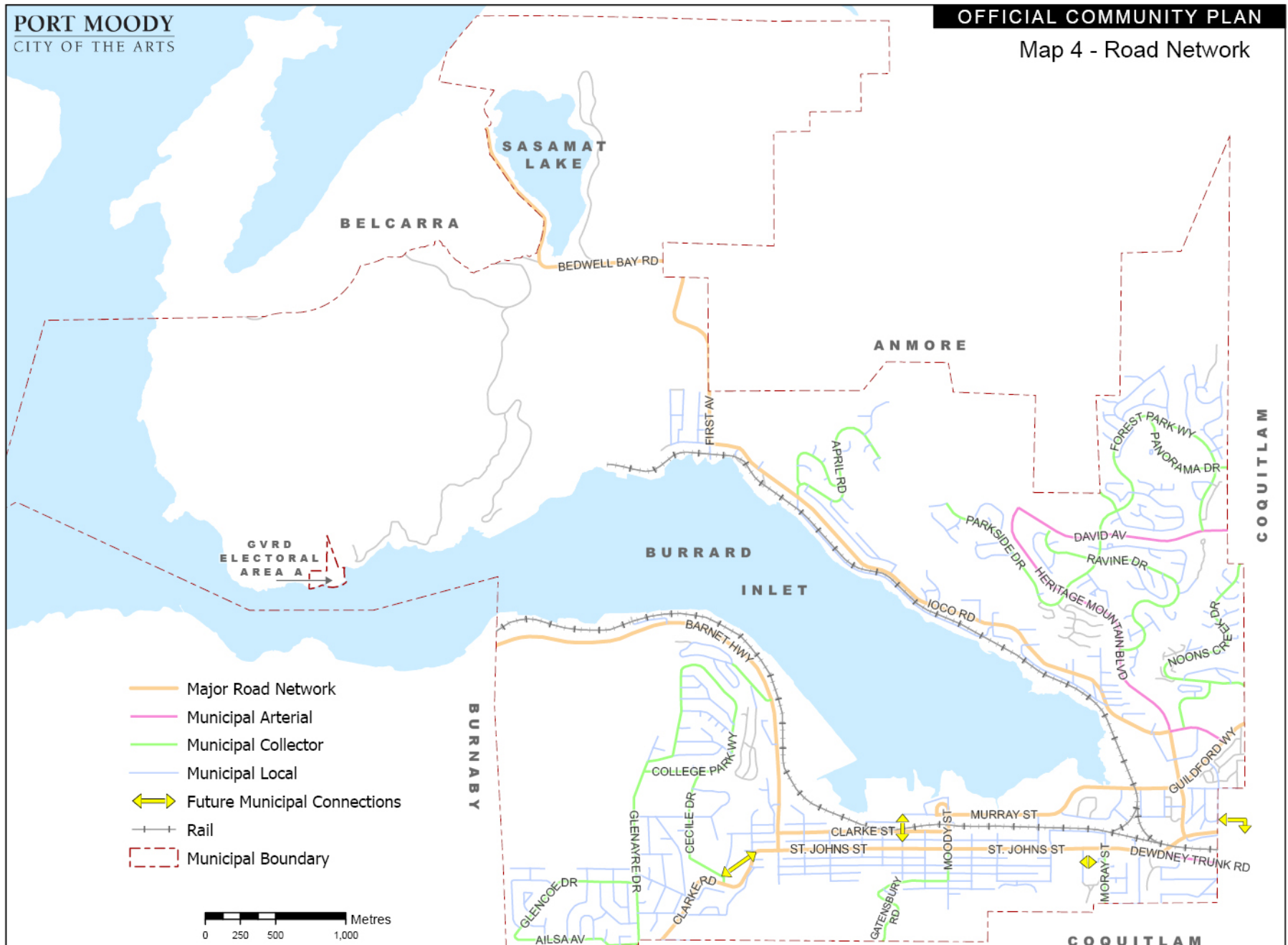
The City of Port Moody makes no representation or warranty expressed or implied with respect to the accuracy, completeness or appropriateness of the information contained hereon.

Date Printed: 8/18/2025  
 Map produced by the City of the Port Moody Information Services



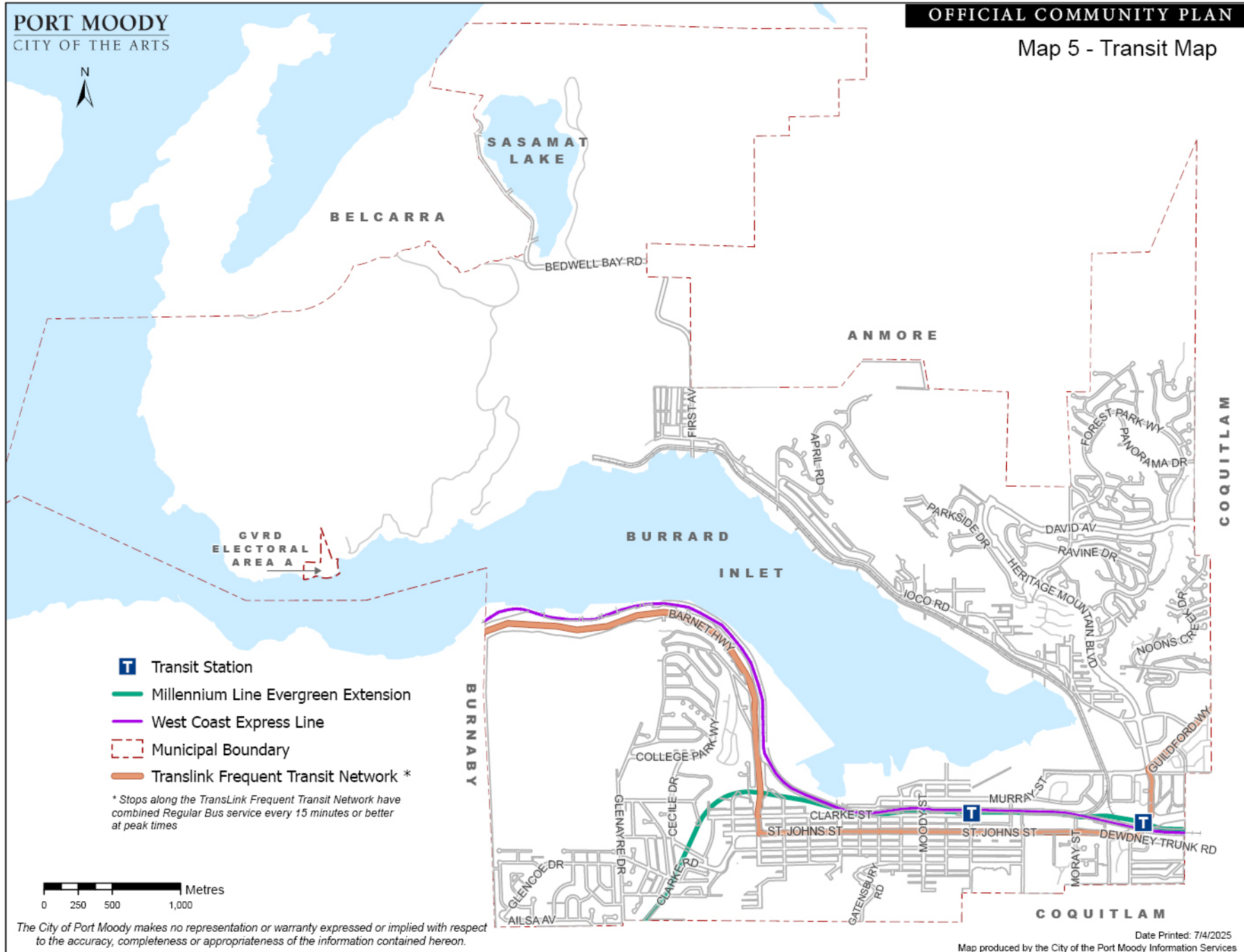
The City of Port Moody makes no representation or warranty expressed or implied with respect to the accuracy, completeness or appropriateness of the information contained hereon.

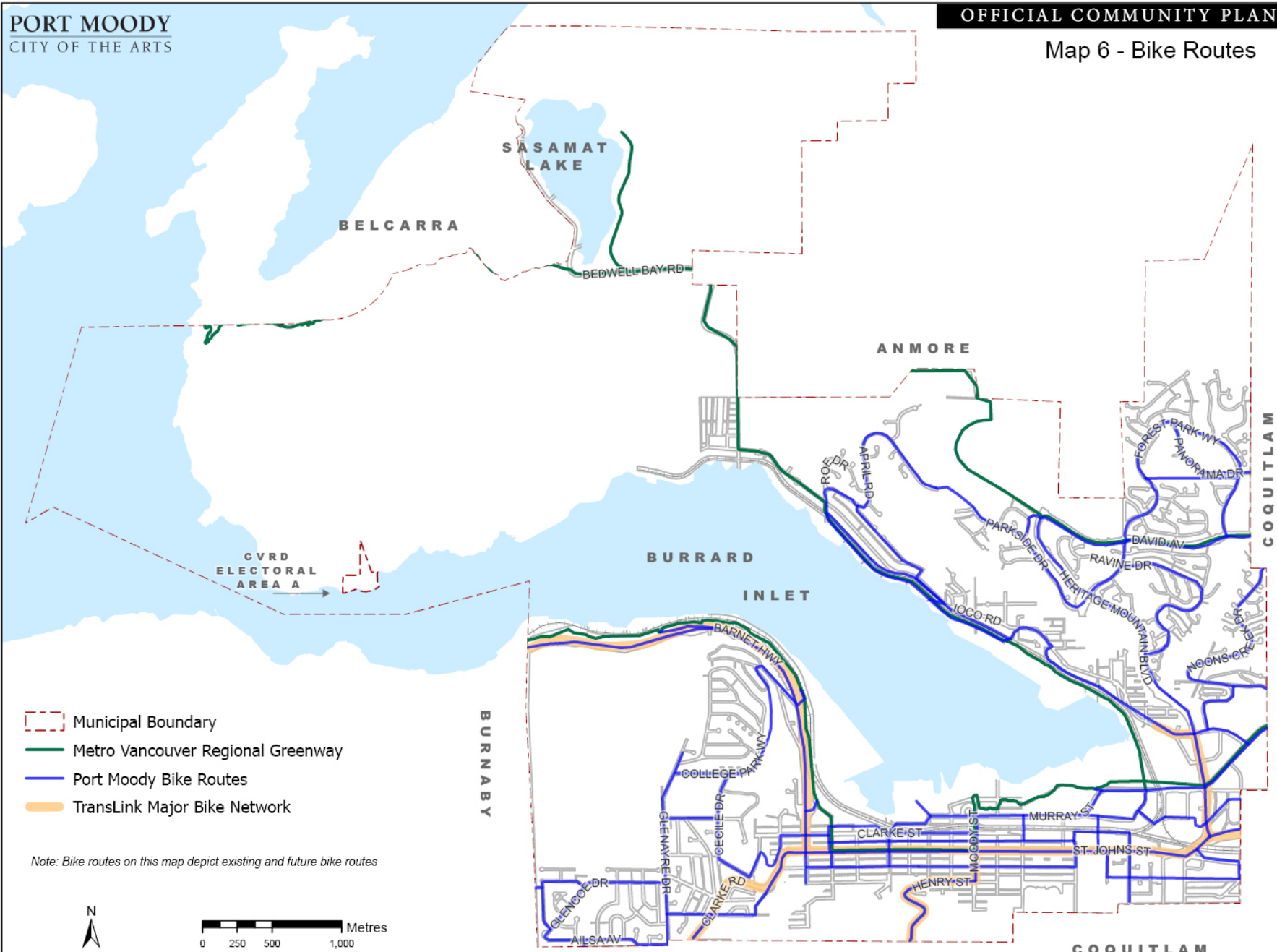
Date Printed: 8/21/2025  
Map produced by the City of the Port Moody Information Services



The City of Port Moody makes no representation or warranty expressed or implied with respect to the accuracy, completeness or appropriateness of the information contained hereon.

Date Printed: 11/28/2023  
Map produced by the City of the Port Moody Information Services

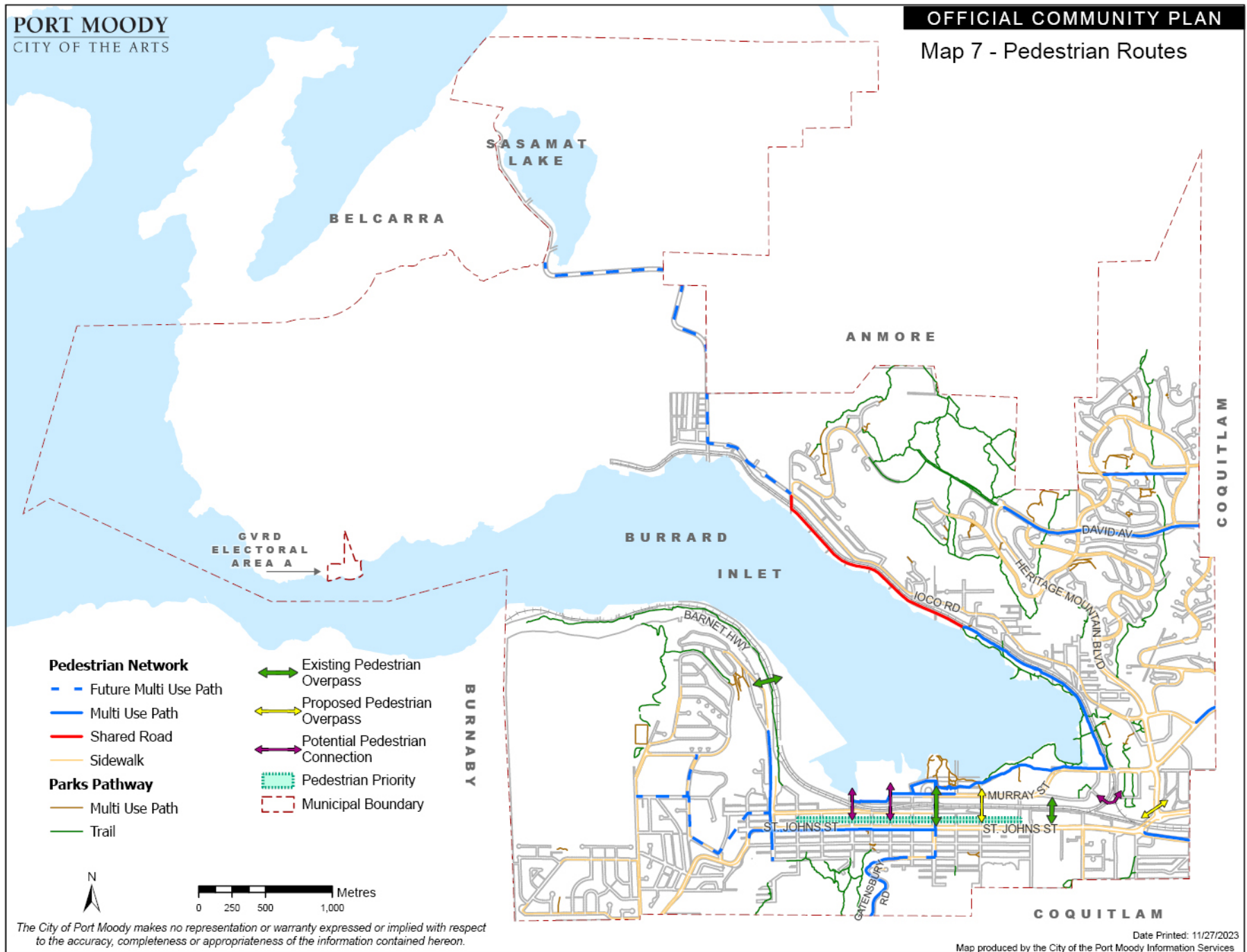


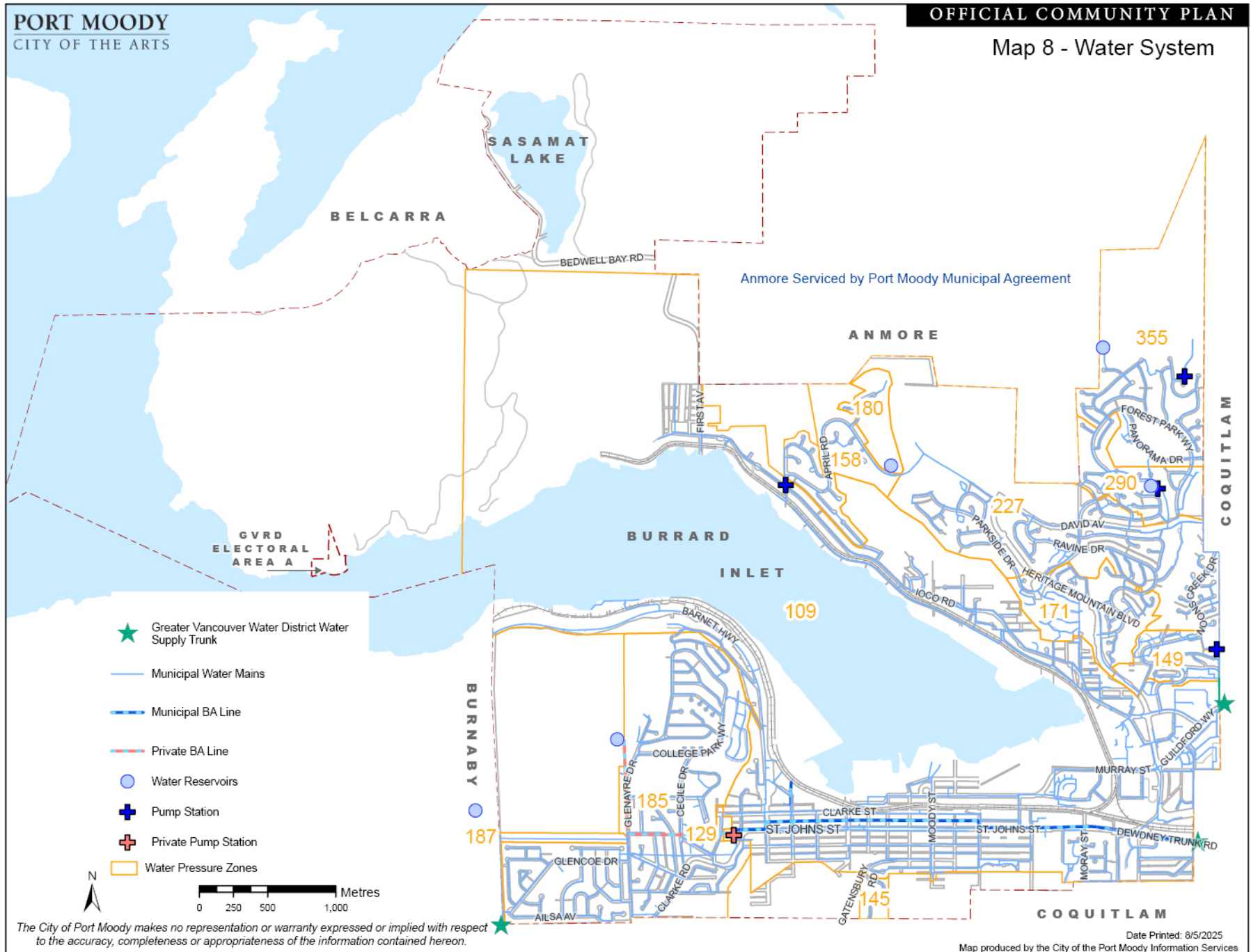


Note: Bike routes on this map depict existing and future bike routes

The City of Port Moody makes no representation or warranty expressed or implied with respect to the accuracy, completeness or appropriateness of the information contained hereon.

Date Printed: 2/2/2026  
Map produced by the City of the Port Moody Information Services

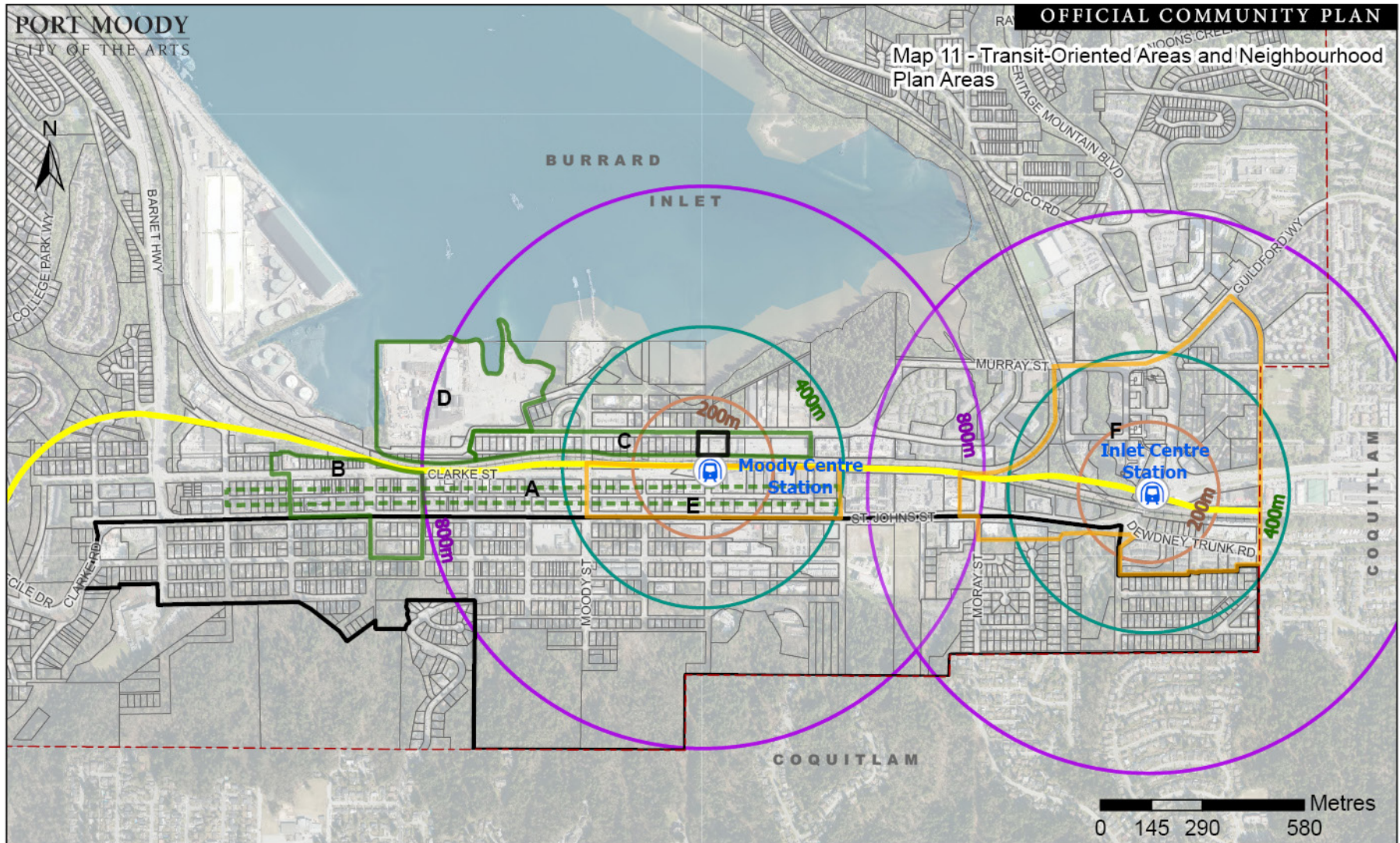








Map 11 - Transit-Oriented Areas and Neighbourhood Plan Areas



**Neighbourhood Plan Areas**

- A - Spring Street Promenade
- B - Heritage Commercial District
- C - Murray Street Boulevard
- D - Oceanfront District

- E - Moody Centre Station Transit-Oriented Area - Core
- F - Inlet Centre Station Transit-Oriented Area - Core
- Murray Street Industrial Special Study Area
- South of St. Johns Street Special Study Area

- Municipal Boundary
- Millenium Line

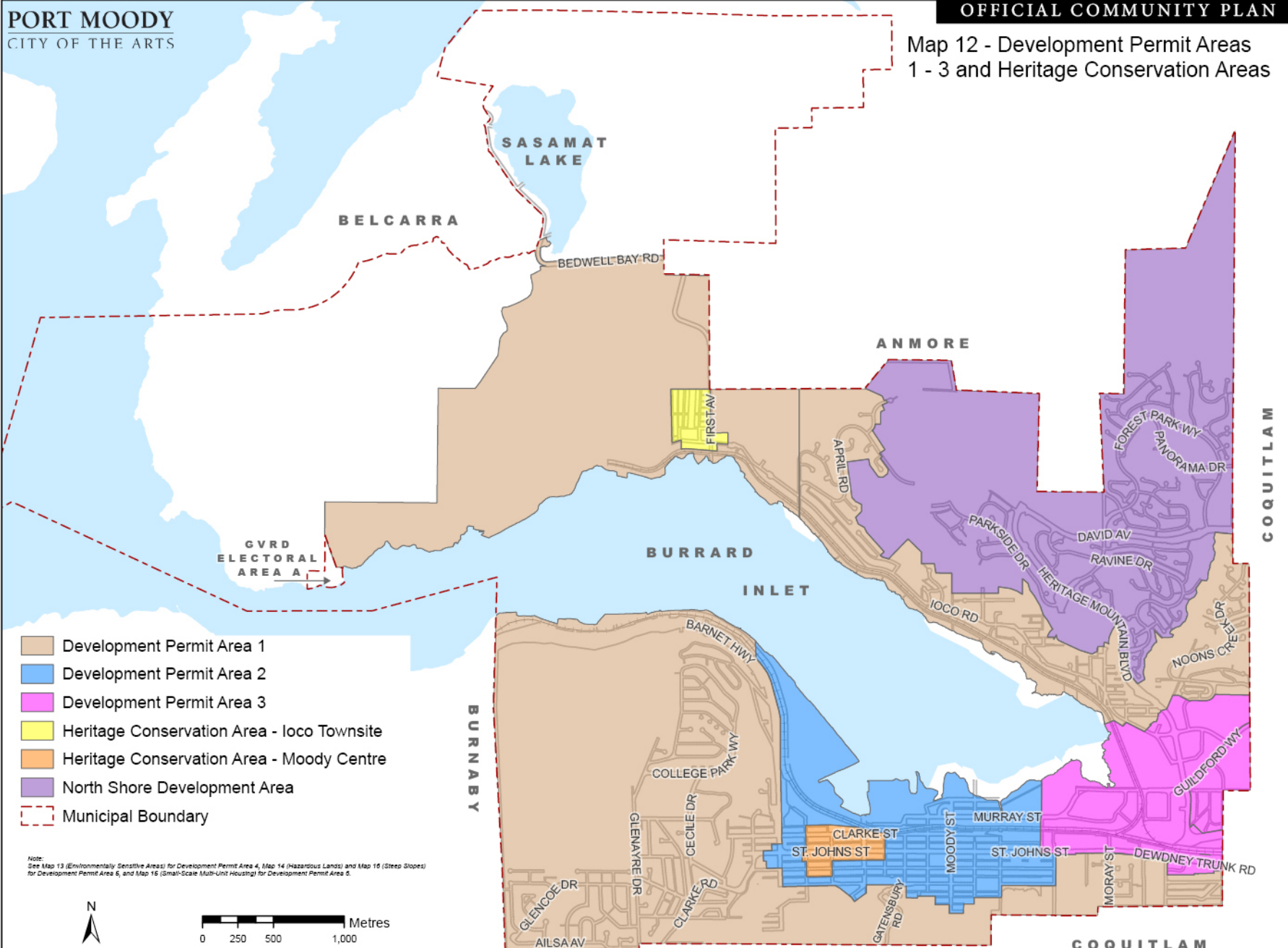
**Transit-Oriented Areas Overlay**

- 200 Metres from Transit
- 400 Metres from Transit
- 800 Metres from Transit

The City of Port Moody makes no representation or warranty expressed or implied with respect to the accuracy, completeness or appropriateness of the information contained herein.

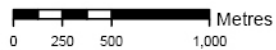
Date Printed: 2/5/2026  
Map produced by the City of the Port Moody Information Services

Map 12 - Development Permit Areas 1 - 3 and Heritage Conservation Areas



- Development Permit Area 1
- Development Permit Area 2
- Development Permit Area 3
- Heritage Conservation Area - Ioco Townsite
- Heritage Conservation Area - Moody Centre
- North Shore Development Area
- Municipal Boundary

Note:  
See Map 13 (Environmentally Sensitive Areas) for Development Permit Area 4, Map 14 (Hazardous Lands) and Map 15 (Steep Slopes) for Development Permit Area 5, and Map 16 (Small-Scale Multi-Unit Housing) for Development Permit Area 5.



*The City of Port Moody makes no representation or warranty expressed or implied with respect to the accuracy, completeness or appropriateness of the information contained hereon.*

Date Printed: 11/20/2025  
Map produced by the City of the Port Moody Information Services

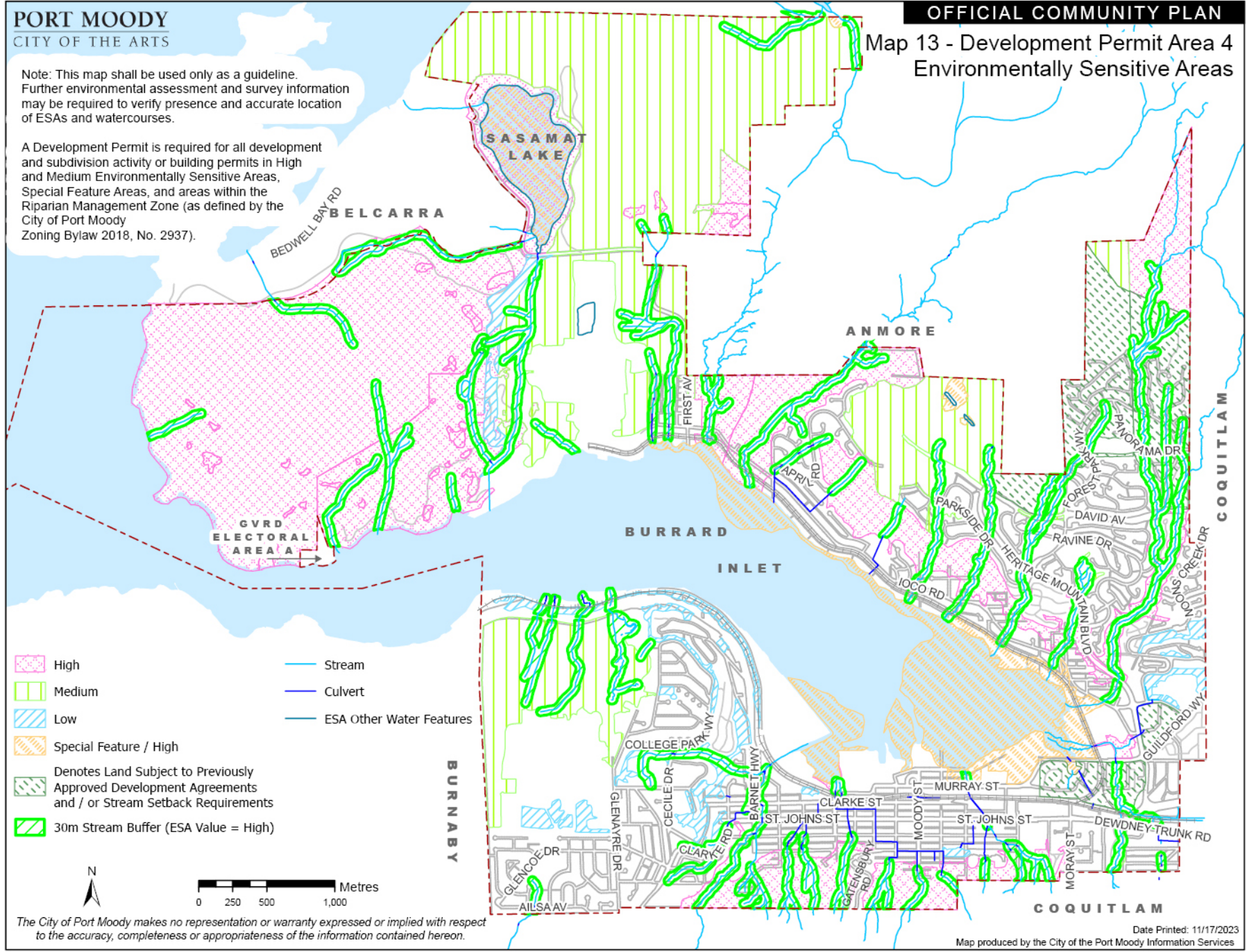
**PORT MOODY**  
CITY OF THE ARTS

**OFFICIAL COMMUNITY PLAN**

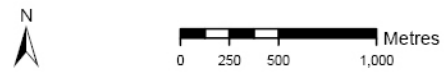
**Map 13 - Development Permit Area 4  
Environmentally Sensitive Areas**

Note: This map shall be used only as a guideline. Further environmental assessment and survey information may be required to verify presence and accurate location of ESAs and watercourses.

A Development Permit is required for all development and subdivision activity or building permits in High and Medium Environmentally Sensitive Areas, Special Feature Areas, and areas within the Riparian Management Zone (as defined by the City of Port Moody Zoning Bylaw 2018, No. 2937).



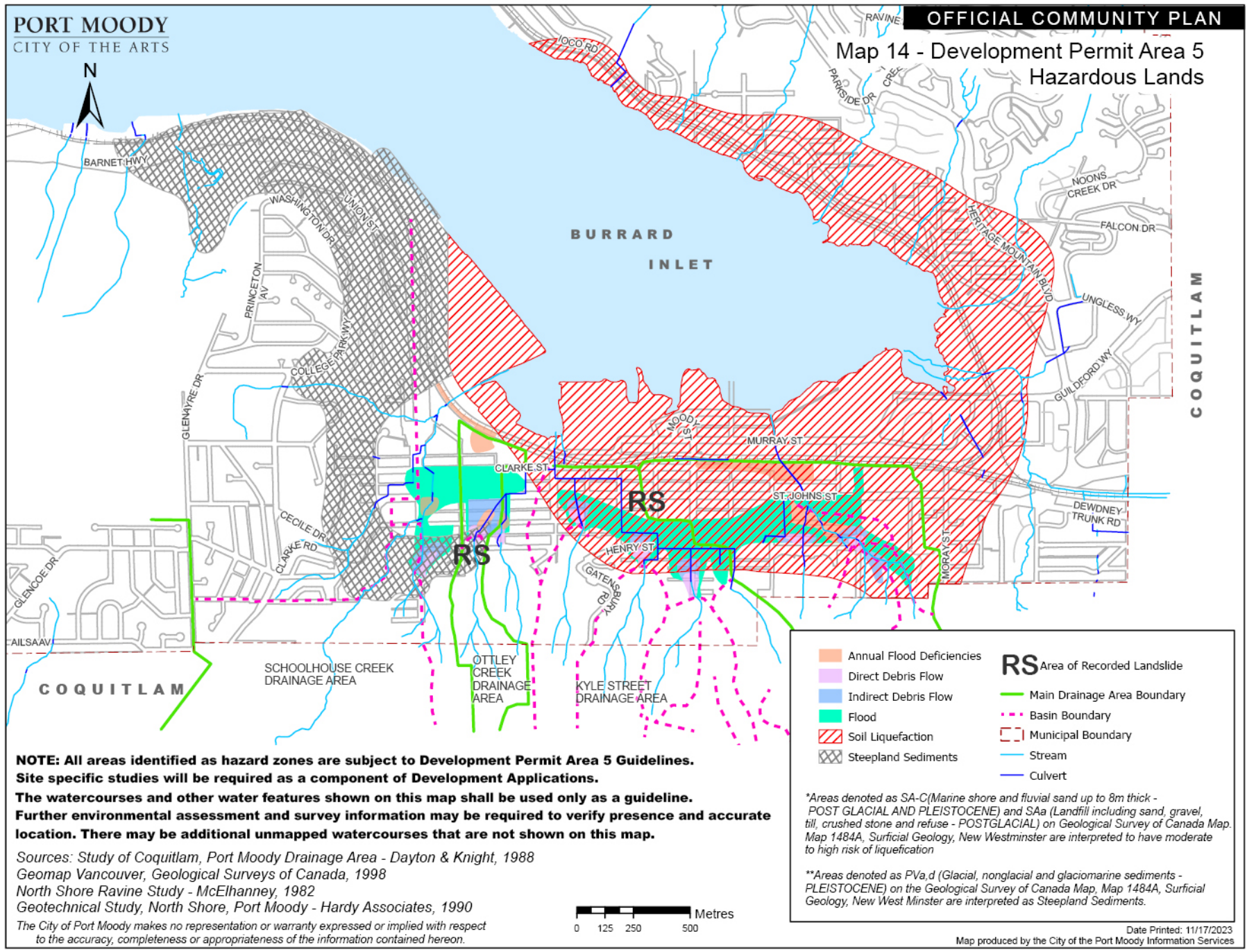
- High
- Medium
- Low
- Special Feature / High
- Denotes Land Subject to Previously Approved Development Agreements and / or Stream Setback Requirements
- 30m Stream Buffer (ESA Value = High)
- Stream
- Culvert
- ESA Other Water Features



The City of Port Moody makes no representation or warranty expressed or implied with respect to the accuracy, completeness or appropriateness of the information contained hereon.

Date Printed: 11/17/2023  
Map produced by the City of the Port Moody Information Services

Map 14 - Development Permit Area 5  
Hazardous Lands



**NOTE: All areas identified as hazard zones are subject to Development Permit Area 5 Guidelines. Site specific studies will be required as a component of Development Applications. The watercourses and other water features shown on this map shall be used only as a guideline. Further environmental assessment and survey information may be required to verify presence and accurate location. There may be additional unmapped watercourses that are not shown on this map.**

Sources: Study of Coquitlam, Port Moody Drainage Area - Dayton & Knight, 1988  
Geomap Vancouver, Geological Surveys of Canada, 1998  
North Shore Ravine Study - McElhanney, 1982  
Geotechnical Study, North Shore, Port Moody - Hardy Associates, 1990

The City of Port Moody makes no representation or warranty expressed or implied with respect to the accuracy, completeness or appropriateness of the information contained herein.

Annual Flood Deficiencies	<b>RS</b> Area of Recorded Landslide
Direct Debris Flow	Main Drainage Area Boundary
Indirect Debris Flow	Basin Boundary
Flood	Municipal Boundary
Soil Liquefaction	Stream
Steepland Sediments	Culvert

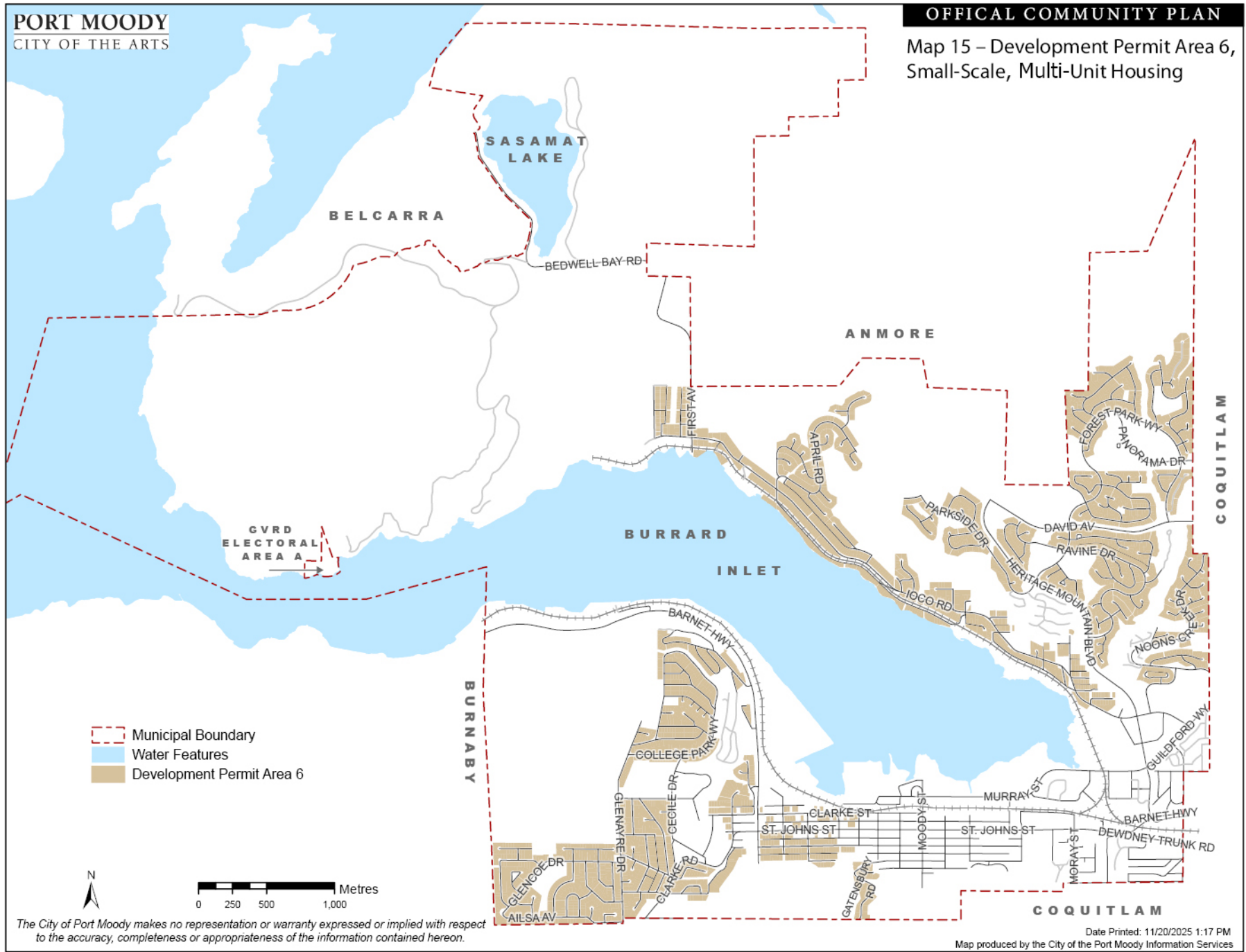
*\*Areas denoted as SA-C (Marine shore and fluvial sand up to 8m thick - POST GLACIAL AND PLEISTOCENE) and SAa (Landfill including sand, gravel, till, crushed stone and refuse - POSTGLACIAL) on Geological Survey of Canada Map, Map 1484A, Surficial Geology, New Westminster are interpreted to have moderate to high risk of liquefaction*

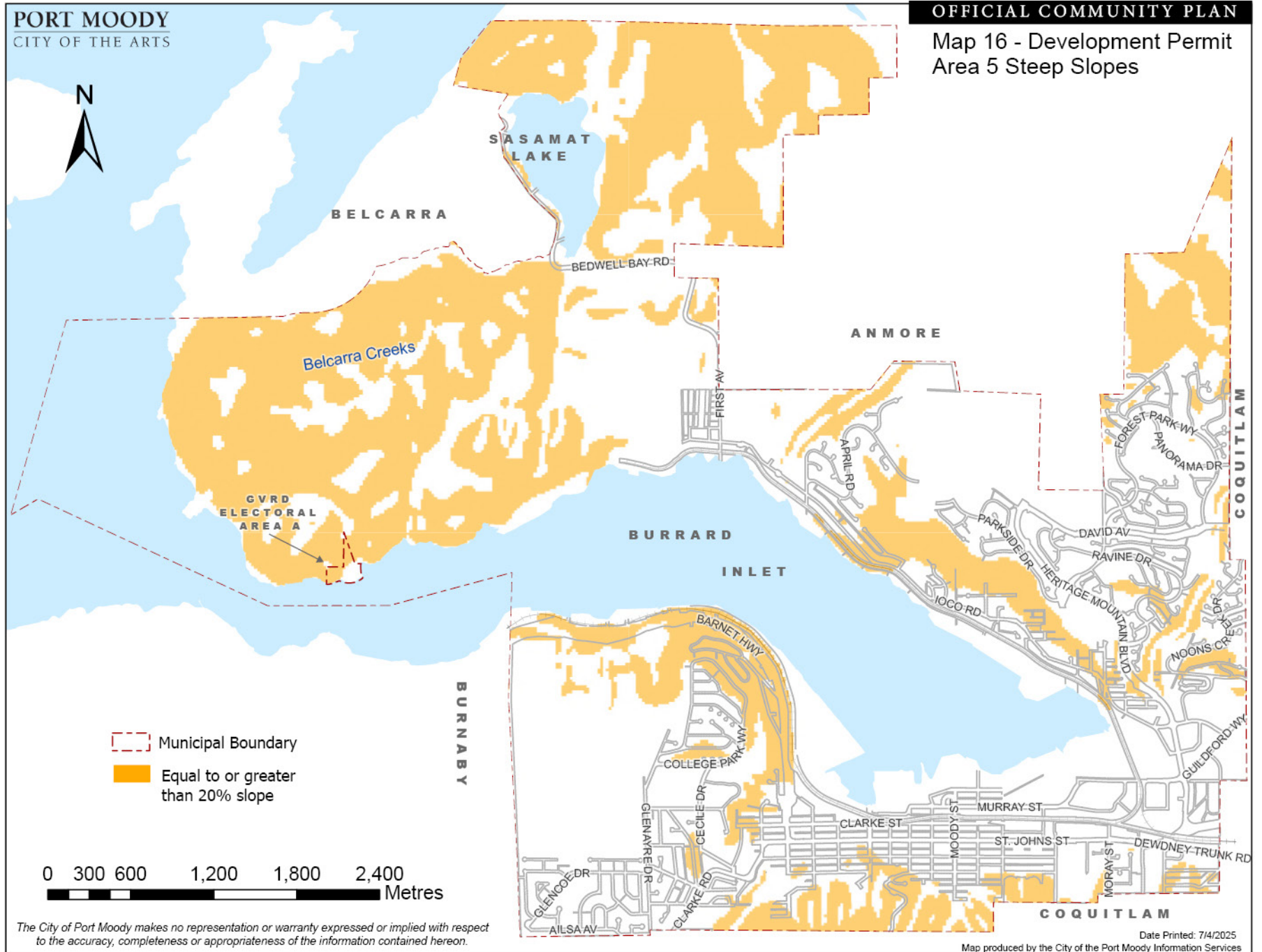
*\*\*Areas denoted as Pva,d (Glacial, nonglacial and glaciomarine sediments - PLEISTOCENE) on the Geological Survey of Canada Map, Map 1484A, Surficial Geology, New Westminster are interpreted as Steepland Sediments.*

Date Printed: 11/17/2023

Map produced by the City of the Port Moody Information Services

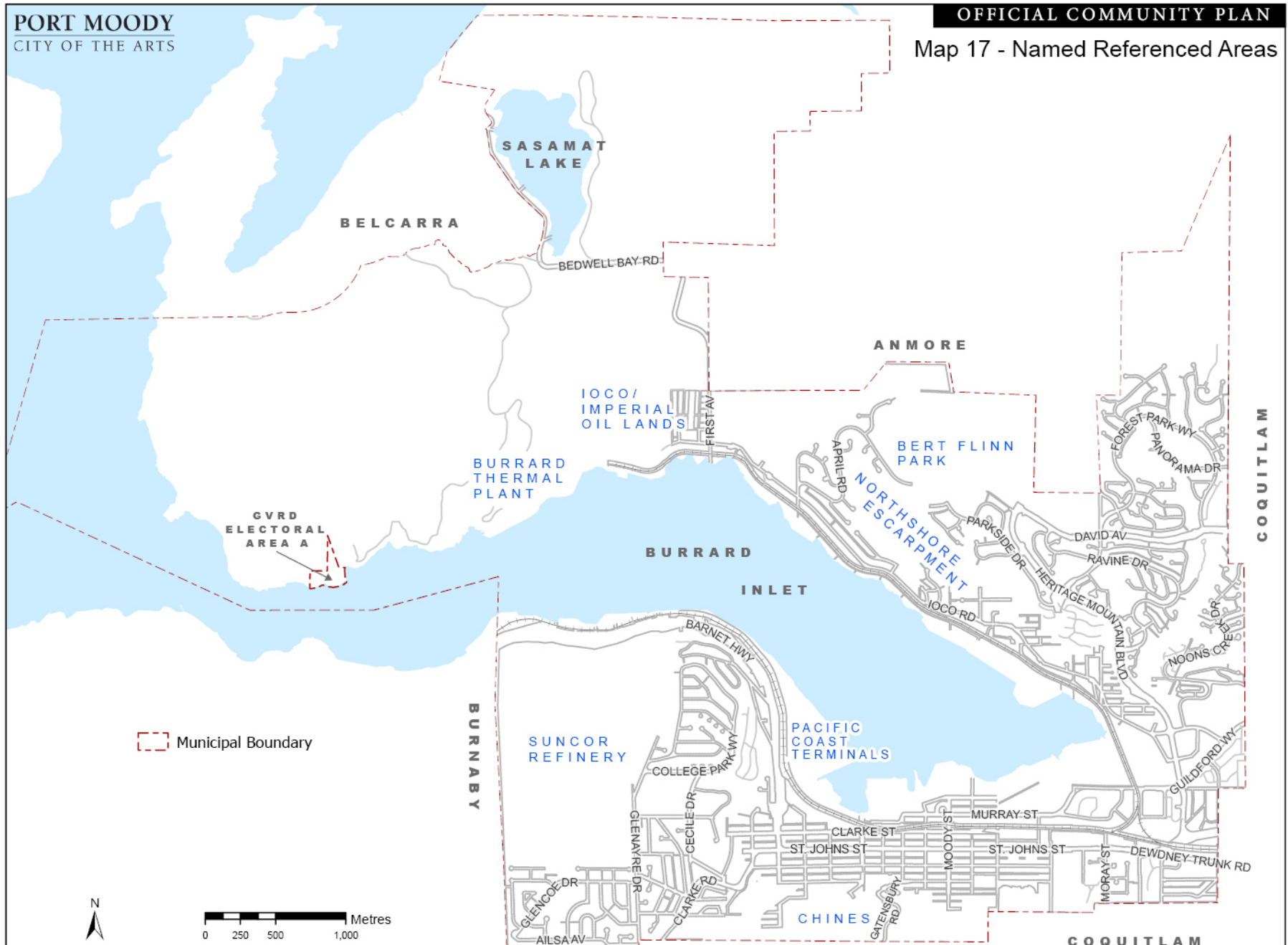
Map 15 – Development Permit Area 6,  
Small-Scale, Multi-Unit Housing





The City of Port Moody makes no representation or warranty expressed or implied with respect to the accuracy, completeness or appropriateness of the information contained hereon.

Date Printed: 7/4/2025  
Map produced by the City of the Port Moody Information Services



The City of Port Moody makes no representation or warranty expressed or implied with respect to the accuracy, completeness or appropriateness of the information contained hereon.

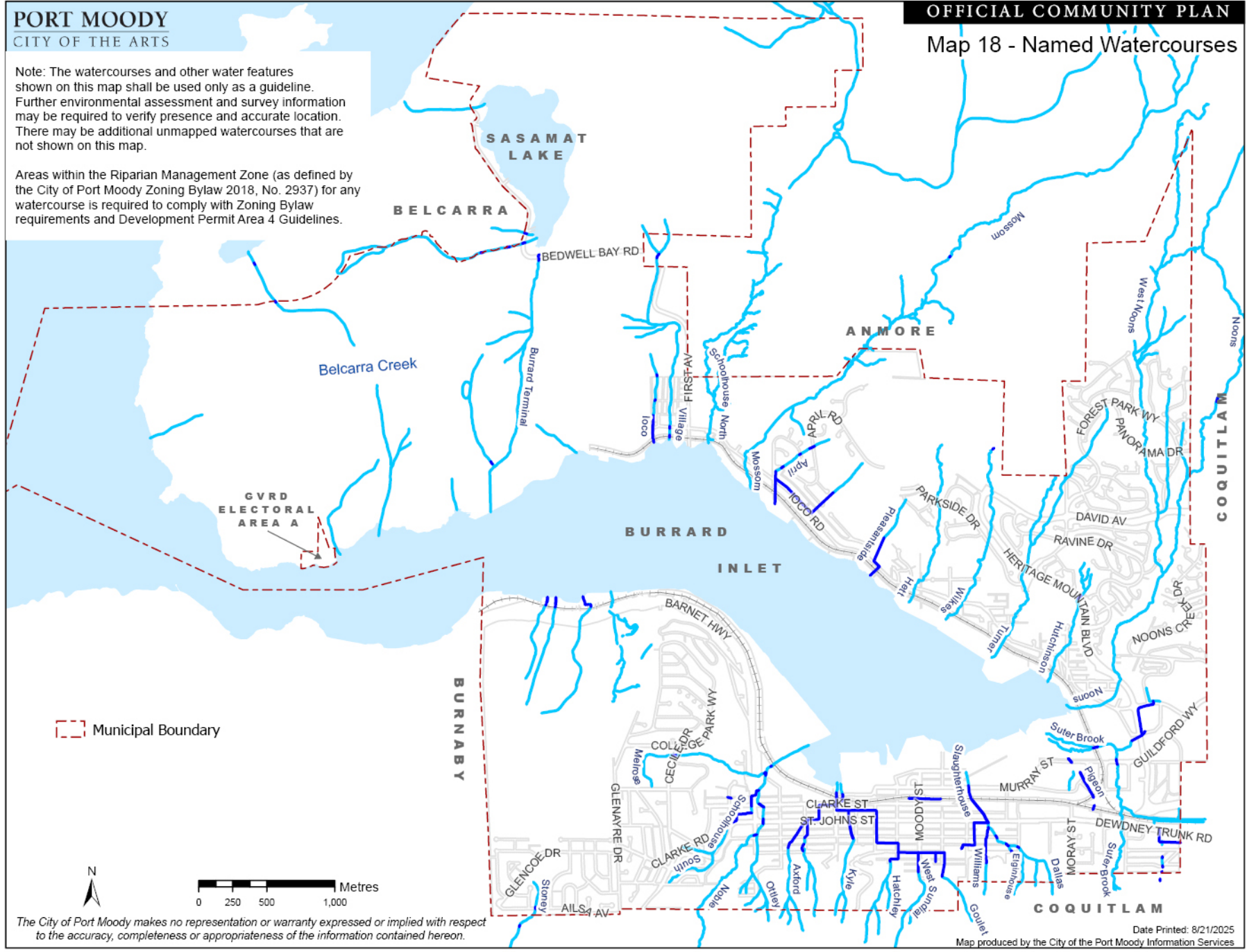
Date Printed: 7/4/2025  
Map produced by the City of the Port Moody Information Services

**PORT MOODY**  
CITY OF THE ARTS

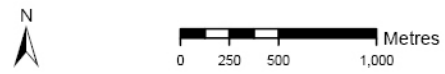
Note: The watercourses and other water features shown on this map shall be used only as a guideline. Further environmental assessment and survey information may be required to verify presence and accurate location. There may be additional unmapped watercourses that are not shown on this map.

Areas within the Riparian Management Zone (as defined by the City of Port Moody Zoning Bylaw 2018, No. 2937) for any watercourse is required to comply with Zoning Bylaw requirements and Development Permit Area 4 Guidelines.

**OFFICIAL COMMUNITY PLAN**  
Map 18 - Named Watercourses

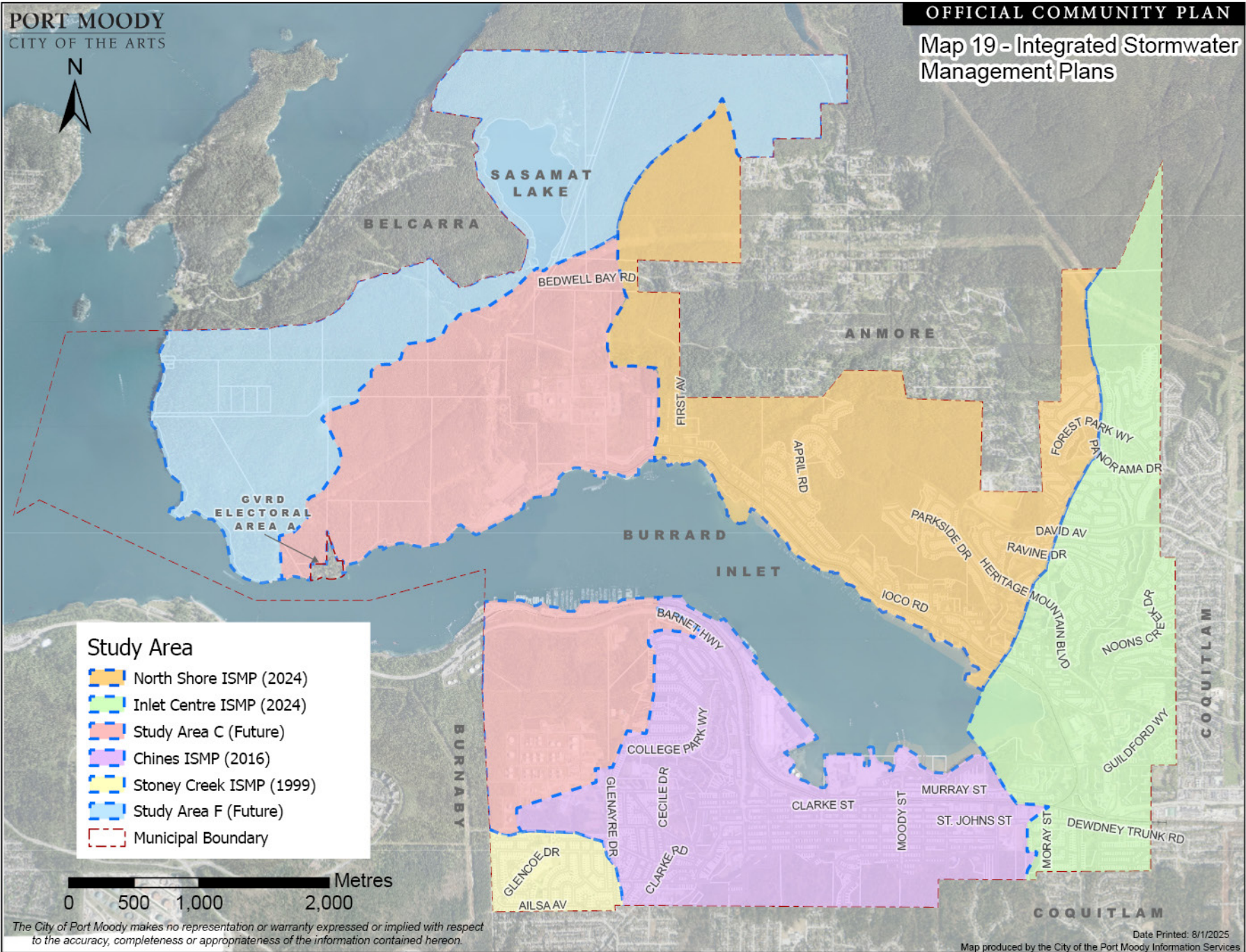


--- Municipal Boundary



The City of Port Moody makes no representation or warranty expressed or implied with respect to the accuracy, completeness or appropriateness of the information contained hereon.

Date Printed: 8/21/2025  
Map produced by the City of the Port Moody Information Services



**Study Area**

- North Shore ISMP (2024)
- Inlet Centre ISMP (2024)
- Study Area C (Future)
- Chines ISMP (2016)
- Stoney Creek ISMP (1999)
- Study Area F (Future)
- Municipal Boundary

0 500 1,000 2,000 Metres

*The City of Port Moody makes no representation or warranty expressed or implied with respect to the accuracy, completeness or appropriateness of the information contained hereon.*

Date Printed: 8/1/2025  
Map produced by the City of the Port Moody Information Services