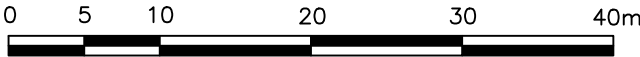


REFERENCE PLAN TO ACCOMPANY CITY OF PORT MOODY ROAD CLOSURE
BYLAW – PORTION OF QUEENS STREET, 2024, NO. 3472 TO CLOSE
A PORTION OF ROAD DEDICATED ON PLAN 55, BLOCK 1,
DISTRICT LOT 202, GROUP 1, NEW WESTMINSTER DISTRICT

PLAN EPP139218

PURSUANT TO SECTION 120 OF THE LAND TITLE ACT
AND SECTION 40 OF THE COMMUNITY CHARTER

BCGS:92G.026



All distances are in metres and decimals
thereof unless otherwise indicated

The intended plot size of this plan is 432mm
in width by 280mm in height (sheet size B)
when plotted at a scale of 1:500.

Some symbols and lines have
been exaggerated for clarity.

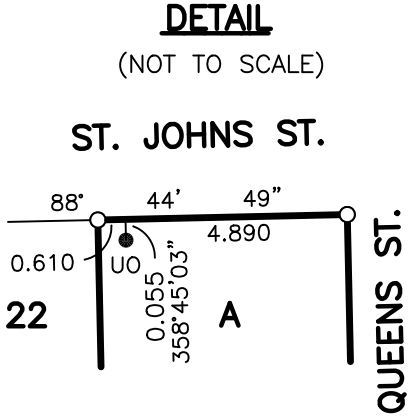
LEGEND

- standard iron post placed
- standard iron post found
- lead plug placed
- lead plug found
- ▲ control monument found
- UO unknown origin
- PP posting plan
- NF nothing found
- m² square metres

Ken K. Wong and Associates
B.C. Land Surveyor
5624 E. Hastings Street
Burnaby, B.C. V5B 1R4
(phone) 604.294.8881
(fax) 604.294.0625
wong_associates@shawbiz.ca
240306 FB977 P23-25
R-1770 TGA-773
Drawn by: TB

Integrated Survey Area No.35, City of Port Moody.
NAD83(CSRS) 4.0.0.BC.1.MVRD.
Grid bearings are derived from observations between
geodetic control monuments 95H1977 and 95H1980 and
are referred to the central meridian of UTM Zone 10.
The UTM coordinates and estimated absolute accuracy
achieved have been derived from the MASCOT published
coordinates and standard deviations for geodetic
control monuments 95H1977 and 95H1980.
This plan shows horizontal ground-level distances
unless otherwise specified. To compute grid distances,
multiply ground-level distances by the average
combined factor of 0.9996022 which has been derived
from geodetic control monument 95H1977.

This plan lies within the Metro Vancouver Regional District.



NAD83(CSRS) 4.0.0.BC.1.MVRD UTM ZONE 10 COORDINATES			
GCM	NORTHING	EASTING	ESTIMATED ABSOLUTE ACCURACY
95H1977	5458239.704	510276.534	0.01m
95H1980	5458236.230	510170.377	0.01m

The field survey represented
by this plan was completed on
the 4th day of July, 2024.
Steven E. Wong, BCLS 942.