



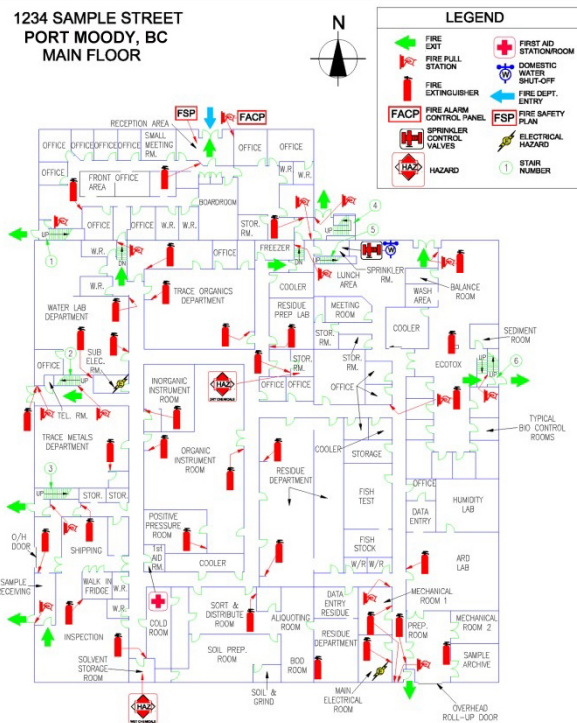
Pre-Incident Plans

Port Moody Fire Rescue now requires pre-incident plans to be sent along with the fire safety plan. The pre-incident plan is Fire Fighter specific which includes all life safety symbols except Fire extinguishers and pull stations. Pre-incident plans assist the Incident Commander in making quick, precise decisions based on vital information located on a well designed Fire Safety Plan. Pre-incident plans aid responding personnel in effectively managing an emergency with available resources while fully understanding the hazards at the specific location.

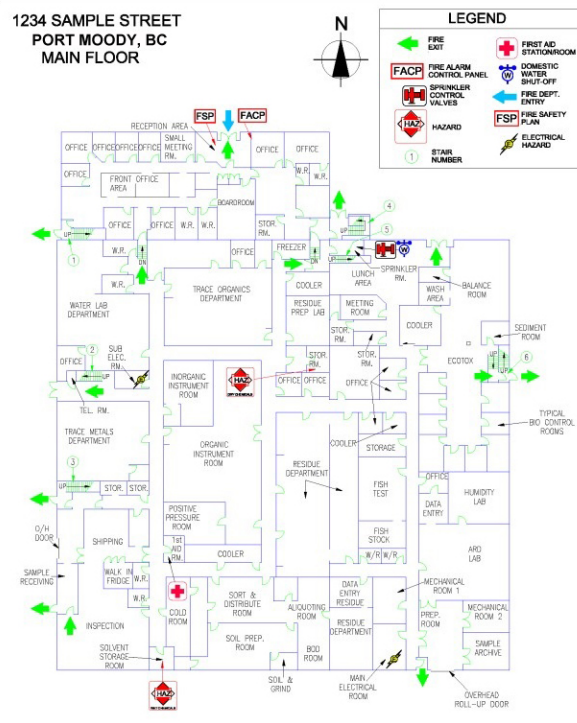
NFPA 1620: Recommended Practice for Pre-Incident Planning is the National Fire Protection Association standard outlining the recommended practice for developing pre-incident plans. NFPA 1620 defines a pre-incident plan as a document developed by gathering general and detailed data (pre-incident plans) used by responding personnel to determine the resources and actions necessary to mitigate anticipated emergencies at specific facilities.

The two samples below show the same floor plan, one with extinguishers and pull stations (Fire Safety Plan Drawing) and one without (Pre-incident Plan Drawing). Click the sample images below for the full resolution PDF versions.

Fire Safety Plan Drawing



Pre-incident Plan Drawing



For more information, please refer to Port Moody Bylaw No. 2835 Section 19.