

August 2, 2022

**Request for Local Art and Artist Services
Public Art Project: Community Artists**

1. Introduction

Partners of the Fraser Health Port Moody Urgent Primary Care Centre (UPCC), are seeking artists to submit local art for display inside of the new UPCC. (See Appendix for Floor Plan and Renderings)

Fraser Health will open a new UPCC that will provide improved access to care and create a culturally safe health care experience for people living in and around Port Moody. The UPCC is looking for local artwork (including our indigenous land based communities) that is encompassing of the local communities, fosters healing and enhances connection to the space.

Request for Physical Art:

Maximum Dimension: Meters

Location	Specific Wall	Length	Height
Business Centre Staff Corridor 03	Rms 134 - 138	5.58	2.6
Break Out and Office Space	Rms 140 - 142	5.66	2.6
Care Team Touch Down Staff Corridor 05	Rms 162 - 164	8.95	2.6

2. Eligibility

This call is open to all artists and artist teams that have a meaningful connection to the community of Port Moody.

3. Selection Process

A selection panel of community leaders, health care leaders and design professionals will review submissions. The selected artist(s)/artist team(s) may be asked to develop their concepts in more detail if required. The selected candidate(s) will be asked to present their design to the selection panel.

Submissions must be received by **September 30, 2022.**

Selected pieces should be received for the Fall 2022

Selected pieces will be commissioned for placement at the site upon opening

4. Selection Criteria

Submissions will be reviewed by the panel based on the following:

- Reflection of the history and heritage of communities in the Port Moody area.
- Appropriateness of the piece to a welcoming and healing environment.
- The safety of the art display for a Health Services environment (no sharp edges, etc)
- How easy the art is to clean and maintain without causing damage to the piece.
- If the art appeals to a broad population.
- Little or no infrastructure (lighting or structural) required to display the art.

5. Submissions

- Prepare a complete scope of work, including delivery and placement
 - Submissions must be display ready
 - Facilities will not be liable for their product
 - Artists must comply with Infection Prevention and Control requirements and protect their own art
 - There should be no scent, paint smell or VOC from the artwork.
 - Art work made on canvas or any other textured material should be encased and protected from elements e.g. a painting in a frame with glass cover on top.
 - Art work should not be produced on material prone to decaying. Any organic material used for presenting art should be appropriately treated to prevent decaying, or provide opportunity for germs to sustain.
 - Art work should not be on any material that is prone to chips, flaking or deterioration.
- Artists to provide only still art - no rough in & electrical requirements
- Refer closely to allocated wall/surfaces for dimension limits on their representations
- Artists need to design the art for the space (wall) specified.
- Artist should produce as they see fit. And deliver and place on the wall specified, as they would like it seen.
 - Artist may advise on where specifically they require support with mounting from the General Contractor or otherwise provide their own means & methods

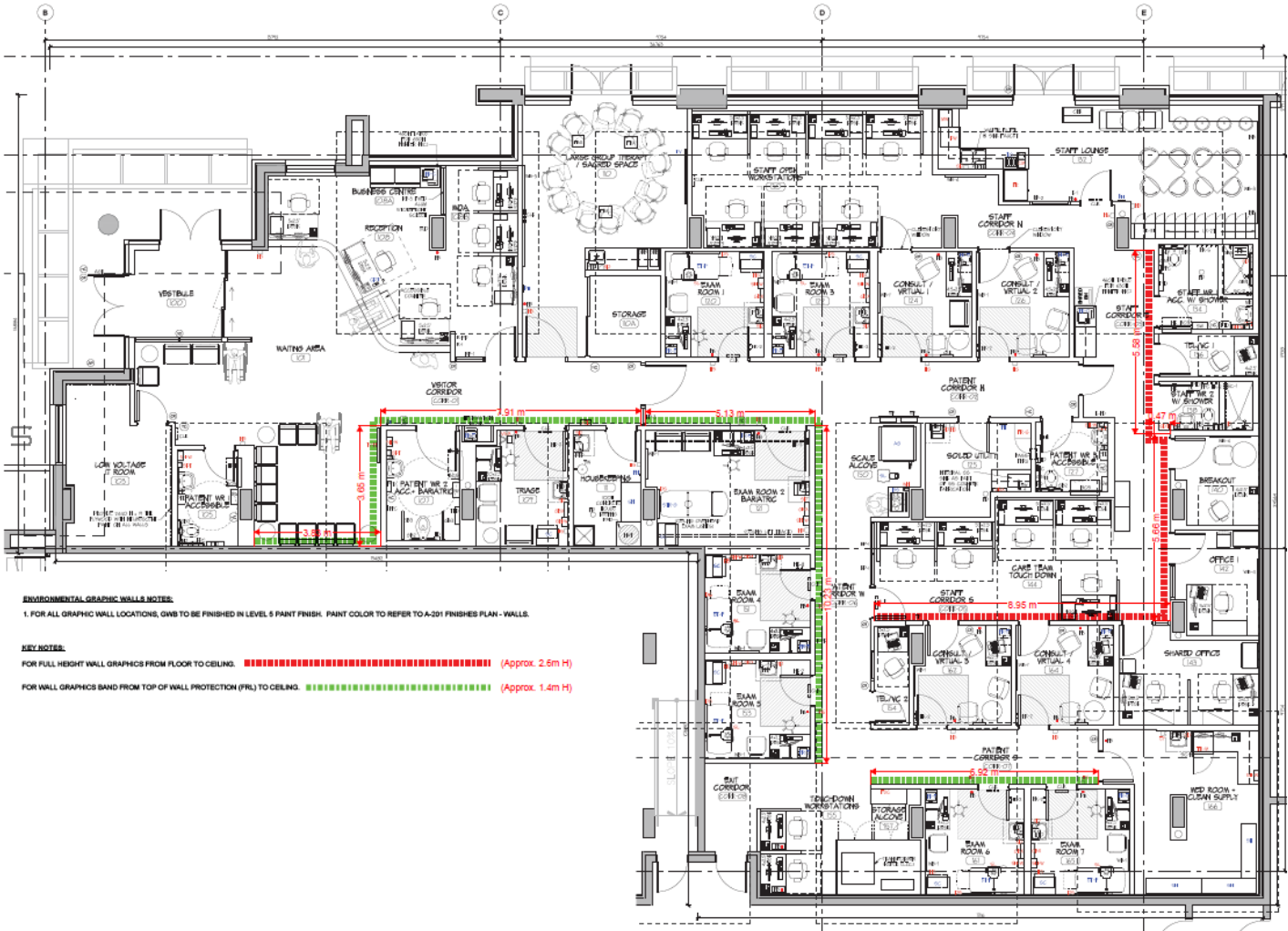
Please include the following in your submission:

- Name, email address and contact phone number.
- Subject of email should include EOI Title: Port Moody UPCC Public Art Project: Community Artists
- What type of art you would like to submit or create.
- Samples, photos and descriptions of the art and its meaning/significance.
- Letters of reference or portfolio for previous art completed.
- Estimated cost of art each art piece or design you are submitting in separate line items.

DUE: Submissions must be received no later than **September 30, 2022.**

Submit Submissions & Questions to: ICS.facilities@fraserhealth.ca

Appendix 1 - Floor Plan

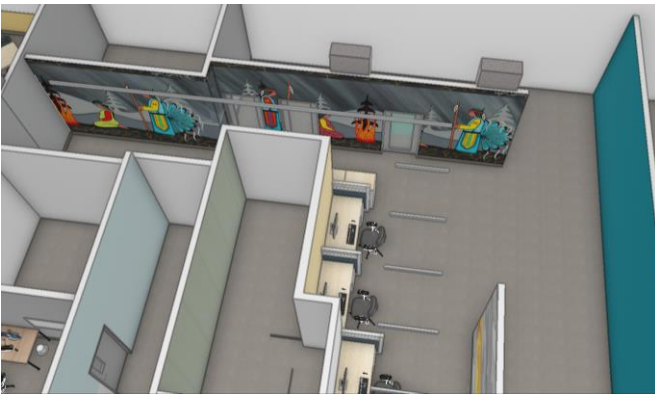


Appendix 2 – Renderings

Business Centre: Staff Corridor 03 / Break Out and Office Space



Breakout and Office Space



Care Team Touch Down: Staff Corridor 05

