

CITY OF PORT MOODY

BYLAW NO. 2690

A Bylaw of the City of Port Moody to regulate parking and boat launching at the Rocky Point Boat launching site and surrounding area.

WHEREAS the City of Port Moody provides a boat launching ramp at Rocky Point Park;

AND WHEREAS it is deemed desirable and expedient to regulate the launching ramp and parking areas and to levy fees for the use of this facility;

THEREFORE, the Council of the City of Port Moody, in open session assembled, enacts as follows:

1. Title

This bylaw may be cited for all purposes as "City of Port Moody Rocky Point Boat Launch and Parking Regulation Bylaw, 2007", No. 2690.

2. Repeal

Bylaw No 1284, cited as "City of Port Moody Rocky Point Boat Launching Ramp Regulation Bylaw, 1976" is hereby repealed.

3. Definitions

Attached Boat Trailer	a trailer attached to a motor vehicle for the purpose of towing.
Bylaw Enforcement Officer	means a person appointed by such by City Council.
Fee	the amount to be paid for parking and launch at the Rocky Point Boat Launch as defined in the Fees and Charges Bylaw No. 2675.
Manager of Parks	the position responsible for operation and maintenance of park services.
Ticket Dispensing Machine	identified as that machine which issues a ticket to allow parking and launching at Rocky Point Boat Launch and is located near the launch area.
Valid Ticket	a ticket purchased from the ticket dispensing machine or authorized agent of the city and good for only the date which has been stamped thereon.

4. Regulated Area Defined

The areas identified on the attached location maps, Schedule A and Schedule B that form part of this bylaw.

5. Fees

Fees for parking and launching are as defined in the Fees and Charges Bylaw No. 2675.

6. Usage of Rocky Point Boat Launch

- (a) It shall be the responsibility of each person using the regulated areas as set out in Section 4 except those persons with annual passes, to secure from the ticket dispensing machine a ticket and to display such ticket or annual pass face up upon the dash of the motor vehicle.
- (b) Motor vehicles without boat trailers attached are prohibited from parking in the Rocky Point Park waterfront and Esplanade Street in the regulated boat trailer parking stalls as outlined in Schedule A.
- (c) Moorage at the dock is limited to the times posted. No moorage will be extended overnight without written permission from the Manager of Parks or their designate.

7. Penalties

- (a) The owner of any vehicle attached to a boat trailer, which does not have a valid ticket or annual pass visible in the location required by Section 6 (a) of the Bylaw shall be deemed to be guilty of an offence against this Bylaw and shall be liable to the penalties hereby imposed.
- (b) Every person, firm or corporation violating any provision of this Bylaw shall be liable on summary conviction to a amount of not more than (\$1,000.00) one thousand dollars.
- (c) A separate offence shall be deemed to be committed on each day during which a violation occurs or continues.
- (d) Offences for which tickets can be issued and fines imposed are prescribed in the Municipal Ticket Information Utilization Bylaw.

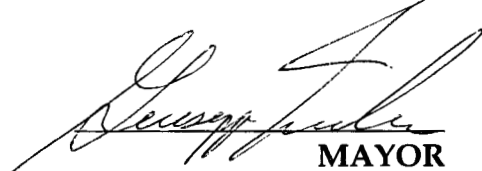
READ A FIRST TIME the 12th DAY OF JUNE, 2007.

READ A SECOND TIME AS AMENDED the 12th DAY OF JUNE, 2007.

READ A THIRD TIME the 12th DAY OF JUNE, 2007.

ADOPTED the 26th DAY OF JUNE, 2007.




MAYOR

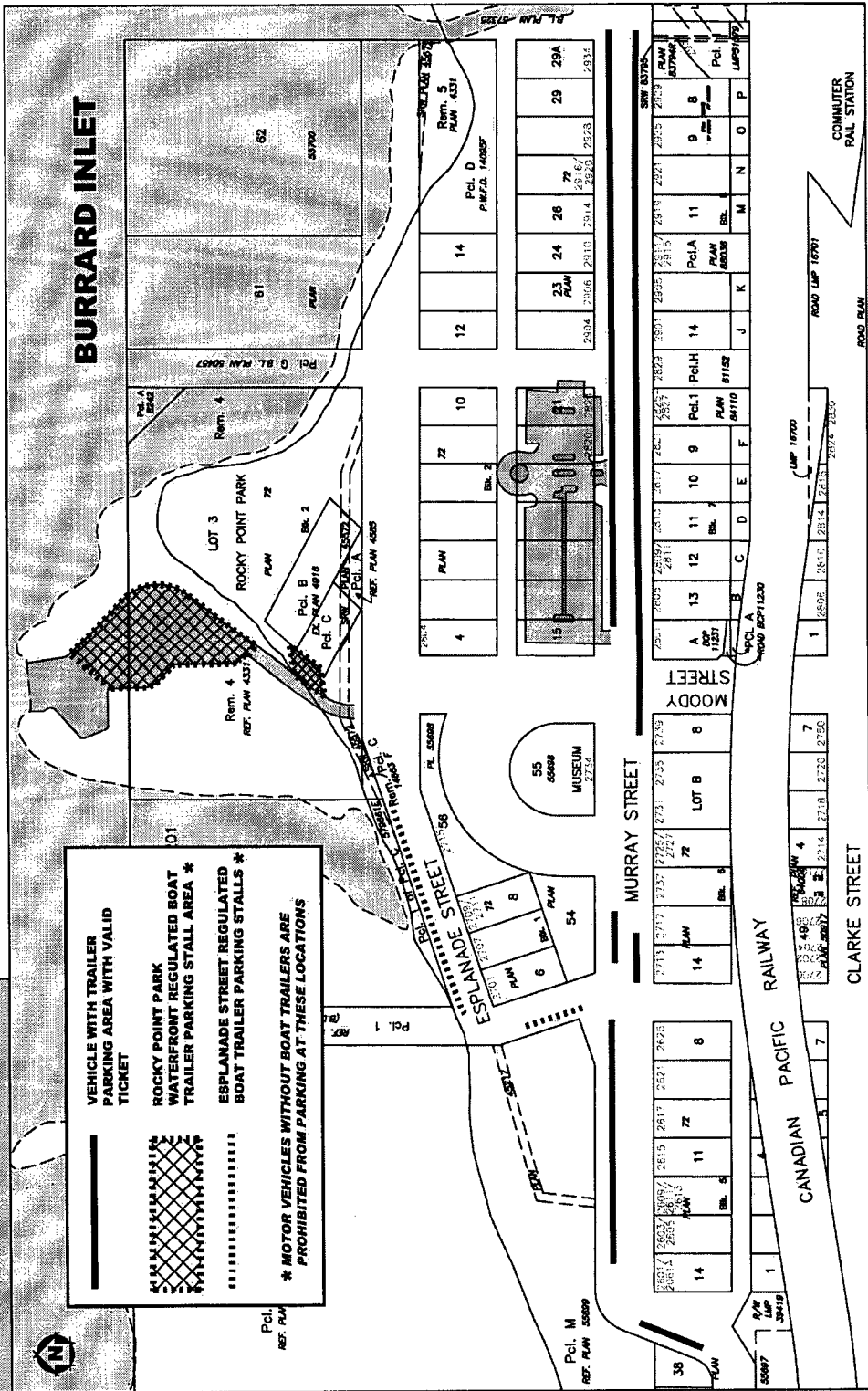

CLERK

**SCHEDULE A -
LOCATION MAP**

**CERTIFIED TRUE COPY OF MAP
REFERRED TO IN SECTION 2 OF
BYLAW NO. 2690**

CITY CLERK

- VEHICLE WITH TRAILER
PARKING AREA WITH VALID
TICKET
- ROCKY POINT PARK
WATERFRONT REGULATED BOAT
TRAILER PARKING STALL AREA *
- ESPLANADE STREET REGULATED
BOAT TRAILER PARKING STALLS *
- * MOTOR VEHICLES WITHOUT BOAT TRAILERS ARE
PROHIBITED FROM PARKING AT THESE LOCATIONS

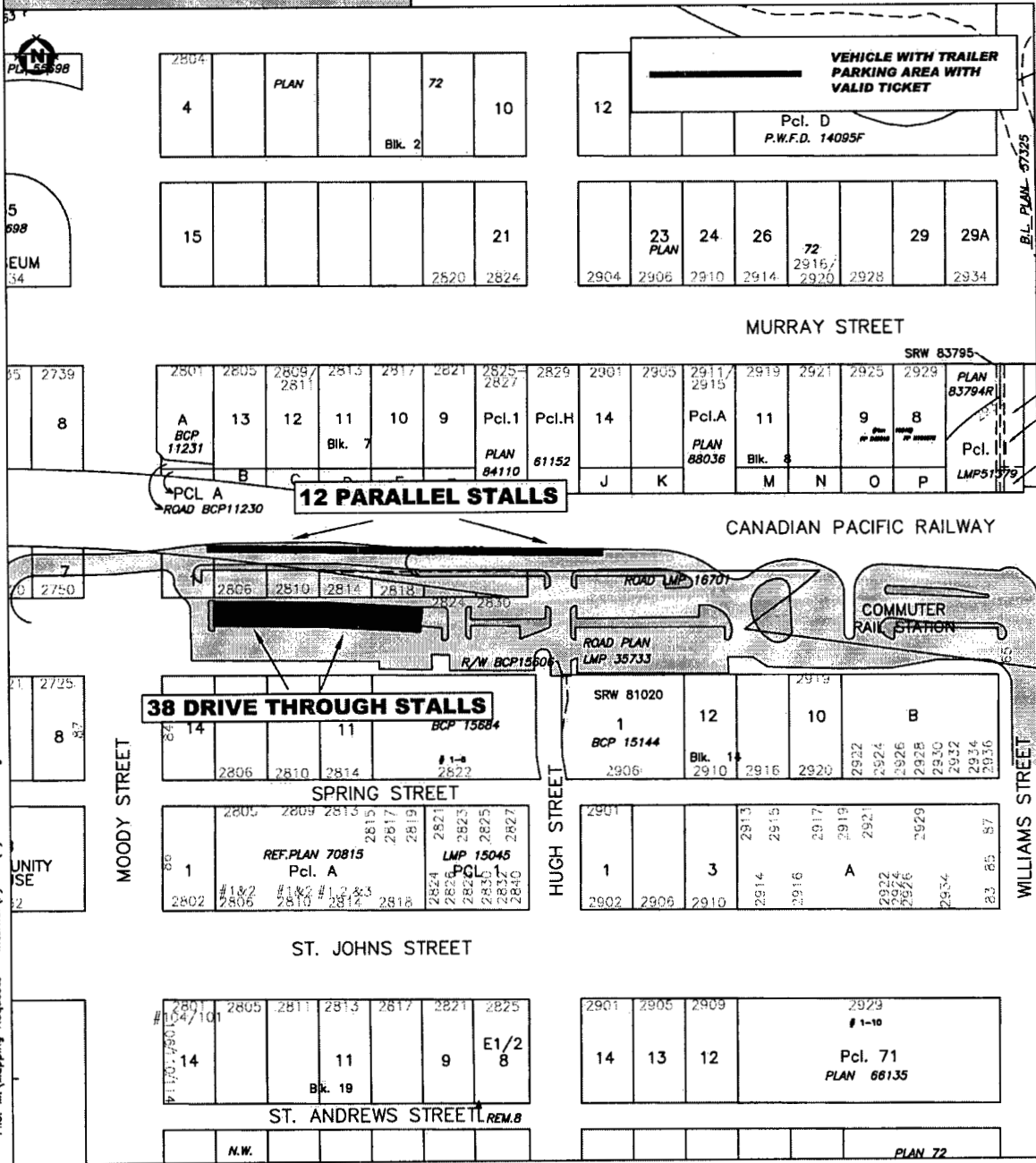


CERTIFIED TRUE COPY OF MAP REFERRED TO IN SECTION 2 OF BYLAW NO. 2690

CITY CLERK

Bylaw No. 2690

SCHEDULE B - LOCATION MAP



File: M:\Mapping Requests - Internal\Bylaws\Bylaw 2690.dwg Last Modified: 2007Jun13

12 PARALLEL STALLS

38 DRIVE THROUGH STALLS

VEHICLE WITH TRAILER PARKING AREA WITH VALID TICKET

MURRAY STREET

CANADIAN PACIFIC RAILWAY

ST. JOHNS STREET

ST. ANDREWS STREET

MOODY STREET

HUGH STREET

WILLIAMS STREET

COMMUTER RAIL STATION



5
598
EUM
34

55
2739
8

6
2750
7

21
2725
8

UNITY
SE
32

14
Blk. 19

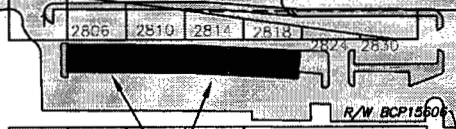
2804		PLAN		72	10
4				Blk. 2	

15					2520	2824
----	--	--	--	--	------	------

12	Pcl. D P.W.F.D. 14095F				
----	---------------------------	--	--	--	--

2304	2306	2310	2314	2316	2320	2328	29	29A
	23 PLAN			72				

2801	2805	2809	2813	2817	2821	2825	2829	2901	2905	2911	2915	2919	2921	2925	2929	SRW 83795
A	13	12	11	10	9	Pcl.1	Pcl.H	14		Pcl.A	11		9	8		PLAN 83794R
			Blk. 7			PLAN 84110	61152	J	K	PLAN 88038	Blk. 8	M	N	O	P	Pcl.



2806	2810	2814	2818	2822	2826	2830
14			11			
					# 1-8	2822

2805	2809	2813	2817	2819	2821	2825	2827
1							
	REF. PLAN 70815				LMP 15045		
	Pcl. A				PG		

2801	2805	2811	2813	2817	2821	2825
14			11		9	E1/2
						8

SRW 81020	12	10	B
1			
BCP 15144	Blk. 1		
2906	2910	2916	2920

2901	2913	2915	2917	2919	2921	2929
1	3			A		
2902	2906	2910	2914	2916	2922	2926

2901	2905	2909	2929
14	13	12	# 1-10
			Pcl. 71
			PLAN 66135

N.W.						PLAN 72
------	--	--	--	--	--	---------